

HONDA
The Power of Dreams

NEW
CITY
Enjoy your challenges

The race lies within



HONDA

Only one thing
matches up to the City.
The City.

No surprise then that we set out to outdo ourselves.
Our winning move? Plush new interiors that redefine
the limits of comfort, making you feel at home.
Our ace? The new V model of the Honda City,
overtaking expectations with a gleaming metallic look.
After all when you're the only
competition, the only thing to do is to overtake yourself.
Presenting the new Honda City.
The race lies within.



You better look good
when racing against yourself.

Your shadow is watching.

The sparkling new finish leaves nothing to compare it with really. The Front Fog Lights shine through the darkest of times to give you clear passage. The smooth curves forge through every unexpected turn. At the finish line, you realize it has always been only you.

arrow shot form



front fog lights*

chrome door
handles*

alloy wheels*

exhaust pipe
finisher*

* features exclusive to the V variant.

Performances never
satisfy you.

This is an exception.

i-VTEC

You can't decide what's better - the power the car delivers or the high fuel efficiency. The 1.5L i-VTEC Engine gives you the best of both worlds.

Suspension

It's going to be a long ride when you're racing against yourself. The Front and Rear Suspension make sure it's smooth as well.

Paddle Shift

The Honda City comes with Paddle Shift, reflecting the racing spirit embedded in each one of our machines. After all, it's only appropriate.



paddle shift



1.5L i-VTEC

Torque (Nm/rpm)	146/4800
Max Power (PS/rpm)	118/6600

*The only comfort zone
you should get used to.
Your car.*

circular silver fan
knob

silver door handle
& door lining

silver color door
switch panel

advanced integrated
audio



Step into its placid Beige Interiors. Slide the windows up.
Find your space, the City has as much of it as you would want.
Settle into its relaxing new seats. Play your favorite song.
And you're ready for anything.

*The race lies within.
The acclaim, outside.*



"Best Midsize Car in Initial Quality"
- J.D.Power 2009 India Initial Quality Study (IQS)

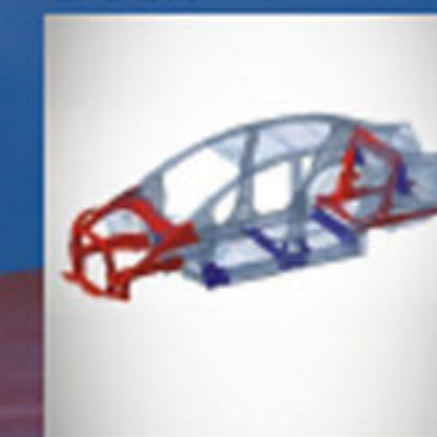


Disclaimer: The Honda City received the lowest number of problems per 100 vehicles among midsize cars in the proprietary J.D. Power Asia Pacific 2003-2009 India Initial Quality Studies™. 2009 study based on responses from 6,600 owners who purchased a new vehicle between November 2008 and July 2009, measuring 13 makes and measures opinions after 90 days of ownership. Proprietary study results based on experiences and perceptions of owners surveyed in May-September 2009.

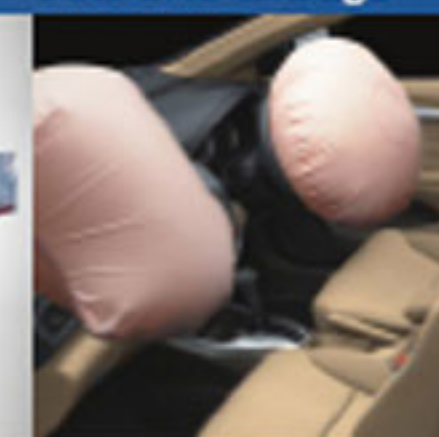


As always,
safety scores first place.

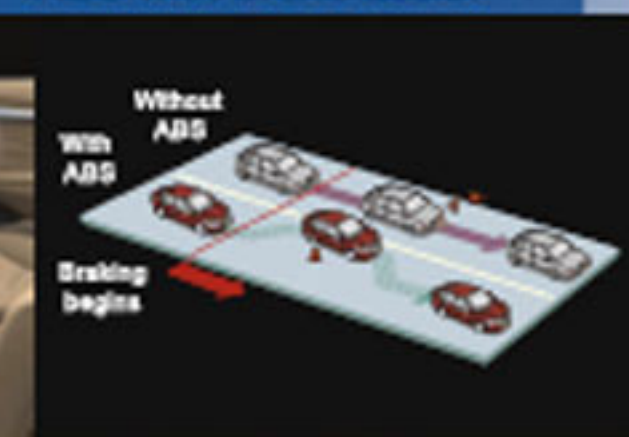
G-CON



dual SRS airbags



ABS with brake assist



Races often come hand-in-hand with sudden bends. Which is why the G-CON technology forms a protective shell around you in the unfortunate event of a collision. Pretensioner Seatbelts tighten should an accident happen to keep the body firmly in place. EBD (Electronic Brake-force Distribution) offers an optimal braking force on all wheels. A design that incorporates not just driver and passenger safety but pedestrian safety into its framework too. So what are you waiting for? Let's race.

1.5 E



key features: 1.5L i-VTEC Engine, Dual Front SRS Airbags, ABS with BA, EBD, G-CON.

1.5 S



key features (in addition to 1.5E): Body Colored Door Handles and Body Colored Outer Door Mirrors.

1.5 V



key features (in addition to 1.5S) : Alloy Wheels, Fog Lamps, Body Colored Mud Guards and Chrome Door Handles.

1.5 E



Available in MT with Greyish Interiors.

1.5 S



Available in MT with new Beige Interiors and Advanced Integrated Audio System.

1.5 V



Available in MT & AT with premium Beige Interiors.

Type

Elegance



side protectors



bumper protectors

Inspire



rear under spoiler



ducktail spoiler



*exhaust pipe finisher optional in S grade.



back up sensor



illuminated side step garnish



side under spoiler



front under spoiler

Chasing Dreams

The power of dreams.

The dream of giving joy.

The dream of creating roads without accidents, a cleaner planet for ourselves and our children and technology that doesn't cost the earth.

The results.

Our G-CON technology that provides a safer driving experience.

The FCX Clarity - the world's first dedicated platform hydrogen vehicle.

The revolutionary i-VTEC engine that couples incredible power with great fuel efficiency.

Innovations like ASIMO, the FCX Clarity and HondaJet that push mobility beyond the realms of the conventional.

That help us inch towards realizing dreams.

That's the philosophy that drives us here at Honda.

ASIMO



the most advanced humanoid robot

The HondaJet



taking Honda's innovative spirit to the skies

FCX Clarity



a car with zero emission

Specifications

	Details	E MT / S MT / V MT	V AT
Dimensions	Overall length (mm)	4420	
	Overall width (mm)	1695	
	Overall height (mm)	1480	
	Wheelbase (mm)	2550	
	Ground clearance (mm)	160	
	Kerb weight (kg)	1100	1155
	Fuel Tank Capacity (L)	42	
Engine	Engine	1.5 L (SOHC) 4 Cylinder, 16 Valve i-VTEC	
	Displacement (cc)	1497	
	Fuel System	Electronic Fuel Injection	
	Fuel Efficiency*	16.7 km/l	15.5 km/l
Performance	Max. Power (PS/rpm)	118 / 6600	
	Max. Torque (Nm/rpm)	146 / 4800	
Transmission	Type	Synchronised 5-Speed Forward & 1 Reverse	5AT with Paddle Shift & 1 Reverse
Suspension	Front Suspension	McPherson Strut with Stabilizer, Coil Spring	
	Rear Suspension	Torsion Beam Axle with Stabilizer, Coil Spring	
Steering	Steering System	Rack & Pinion	
	Power Assisted	Power Steering (EPS)	
	Minimum Turning Radius (m)	5.3	
Brakes	Front Brakes	Disc	
	Rear Brakes	Drum	
Tyres & Wheels	Wheel Type	Steel (1.5E & S) Alloy (1.5V)	Alloy (1.5V)
	Wheel Size	15x5.5J	
	Tyre	175 / 65 R15 (Tubeless)	



Experience the technology of tomorrow. Move ahead towards a greener future with E10 (10% ethanol and 90% unleaded petrol) ready Honda cars.

Colors

New



Urban Titanium Metallic



Habanero Red Pearl



Bold Beige Metallic



Crystal Black Pearl



Alabaster Silver Metallic



Tafeta White

*Test Results of Rule 115 of CMVR

Features

Details	E MT	S MT	V MT / AT
Exteriors			
Alloy Wheels	-	-	o
Front Fog Lamp	-	-	o
Door Handles	Black	Body Colored	Chrome
Exhaust Pipe Finisher	-	-	o
Mud Guards	-	o	Body Colored
Body Colored Bumpers	o	o	o
Rear Fender Cover	o	o	o
Green Tinted Glass	o	o	o
Body Colored Outer Door Mirrors	-	o	o
Halogen Headlights	o	o	o
Dual Horn	o	o	o
Interiors			
Height Adjustable Driver Seat (Lever Type)	-	o	o
Front Cup Holder	o	o	o
Distance to Empty	o	o	o
Average Fuel Consumption	o	o	o
Inner Door Handle & Lining	Black	Black	Silver
Advanced Integrated Audio with Remote Control (USB/AUX/MP3/AM/FM)	-	o	o
Seat Fabric	Greyish	Beige (New)	Beige (High Grade)
Seat Back Pocket (Driver Side)	-	-	o
Seat Back Pocket (Passenger Side)	-	o	o
Door Switch Panel	Black	Black	Silver
Tweeters	-	-	o
Center AC Knob	Black	Silver	Silver
Front and Rear Speakers	-	o	o
Steering Mounted Audio Control	-	o	o
Rear Seat Armrest	o	o	o
Rear Seat Armrest with Cup Holder	-	o	o
Aluminum Finish Center/Console Panel	o	o	o
Tilt Steering Column	o	o	o
Air Conditioning with Heater	o	o	o
Chrome Plated Hand Brake Knob	-	o	o
Silver Finish Steering Panel	-	o	o

Details	E MT	S MT	V MT / AT
Convenience			
Power Door Lock	o	o	o
Power Door Mirror	o	o	o
Day/Night Mirror	o	o	o
Accessory Socket	o	o	o
Pull Pocket Driver Side	o	o	o
Front Console Pocket	o	o	o
Center Console High Armrest	-	o	o
Power Windows Front & Rear	o	o	o
Passenger Vanity Mirror	-	o	o
Fuel Consumption Display with Warning	o	o	o
Headlight Height Adjuster	o	o	o
Foot Rest	o	o	o
Key Alarm	o	o	o
Keyless Entry with Answer Back	-	o	o
Headlight Alarm	o	o	o
Safety and Security			
Dual Front SRS Airbags	o	o	o
Anti-lock Braking System (ABS) with Brake Assist	o	o	o
G-CON (G-Force Control Technology)	o	o	o
Electronic Brake-force Distribution (EBD)	o	o	o
Rear Window De-Fogger	o	o	o
Seatbelt Pretensioner with Double Load Limiter	o	o	o
Driver Seatbelt Reminder	o	o	o
High Mount Stop Lamp	o	o	o
Driver Side Pinch-Guard	o	o	o
Childproof Rear Door Locks	o	o	o
ECU Immobilizer System	o	o	o



The accessories shown may not be a part of the standard equipment. Actual color of the car may vary from the ones shown here. Please check the availability of variants and colors at the dealership. Specifications and features are subject to change without prior notice.

dealer stamp

Honda Cars India Ltd.

